



# CELESTIAL

## COLLECTION

Luxury Granite



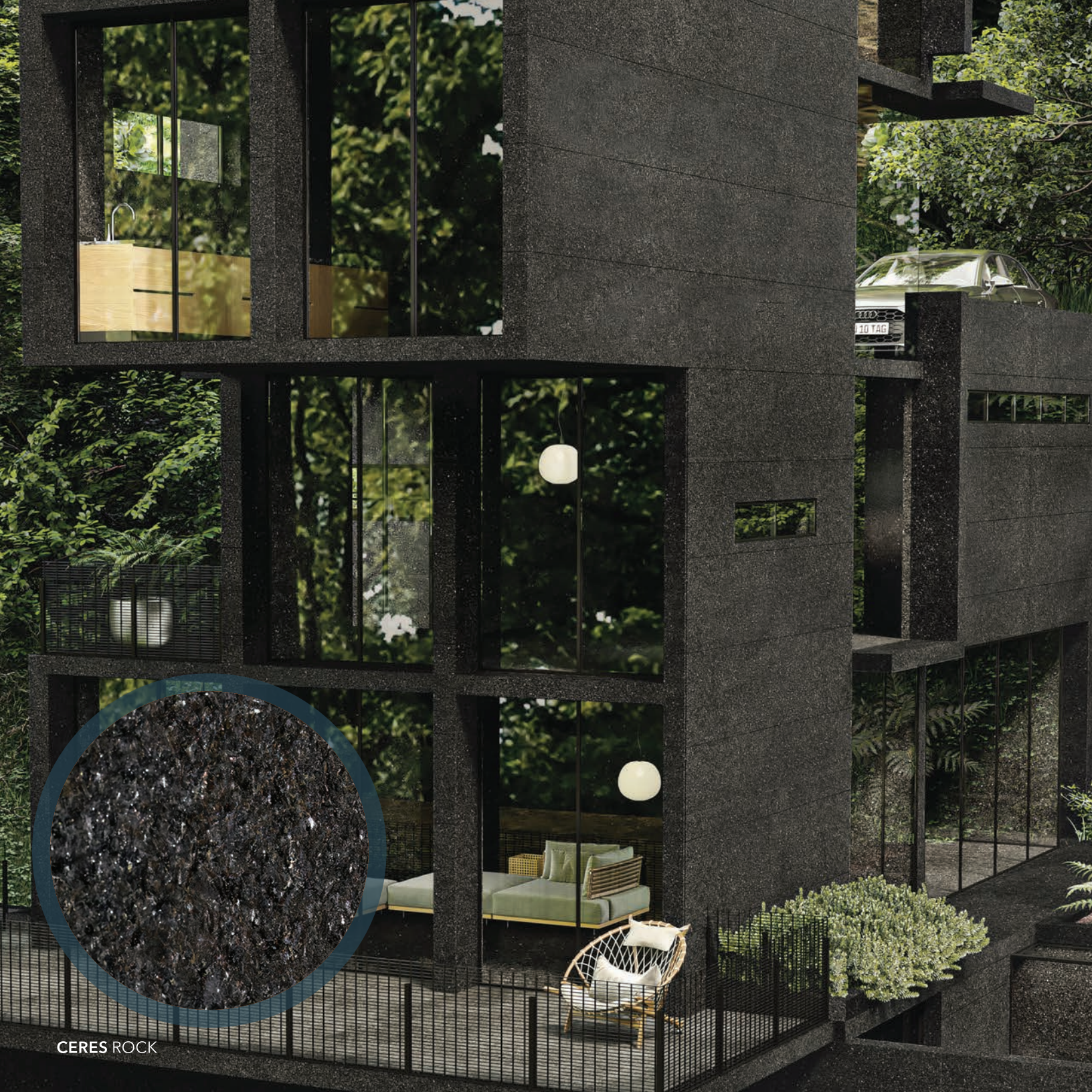
# CELESTIAL

## COLLECTION

Luxury Granite



About	5
Auroura	6
Ceres	8
Cybele	10
Elektra	12
Geographos	14
Hathor	16
Hermes	18
Icarus	20
Juno	22
Pallas	24
Themis	26
Vesta	28



CERES ROCK

# CELESTIAL

## COLLECTION

Luxury Granite



## ABOUT

**celestial** [suh-les-chuhl]

*adjective*

1. pertaining to the sky or visible heaven, or to the universe beyond the earth's atmosphere, as in celestial body.
2. pertaining to the spiritual or invisible heaven; heavenly; divine: celestial bliss.
3. of or relating to celestial navigation: a celestial fix

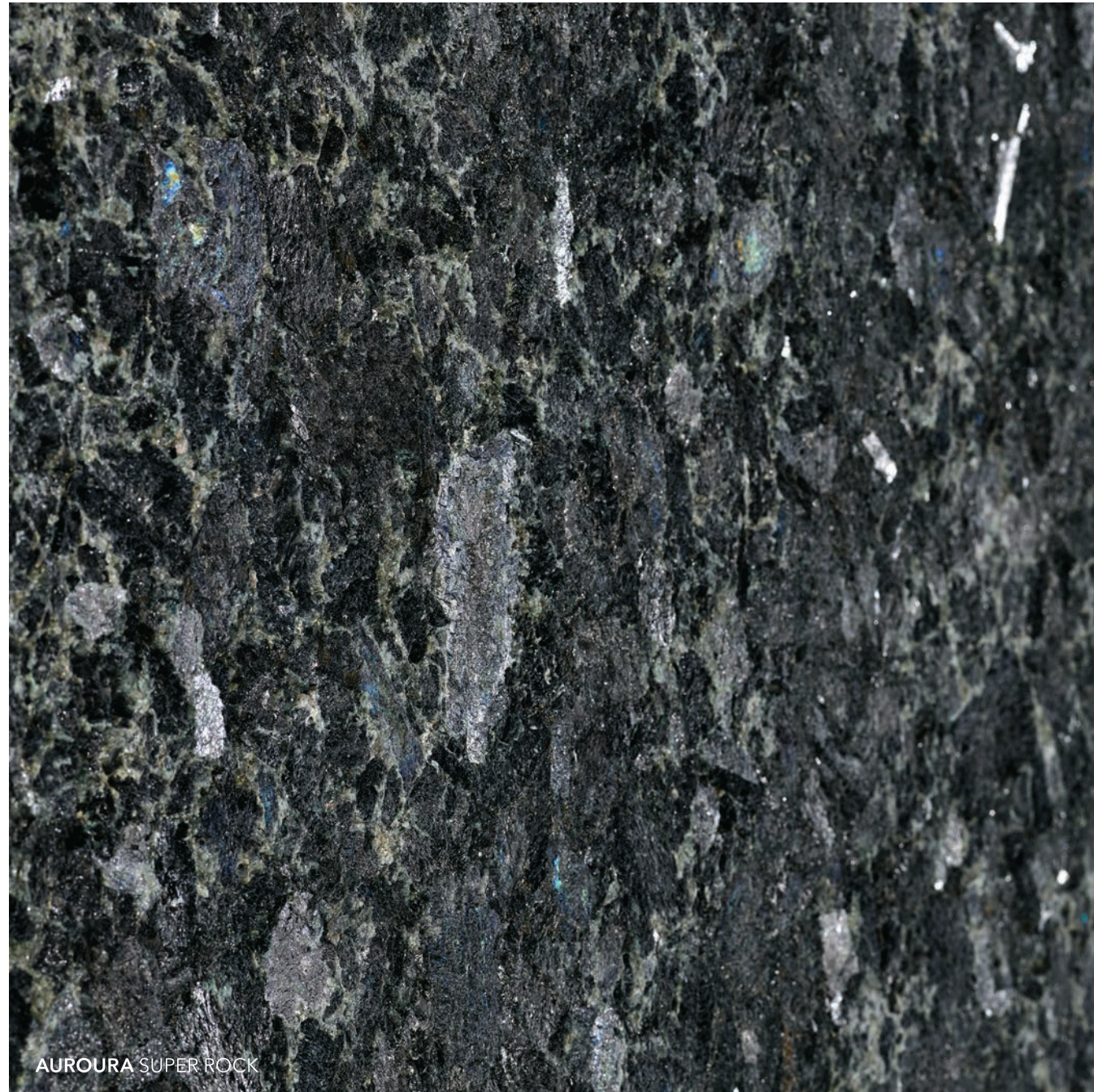
*noun*

4. an inhabitant of heaven.

---

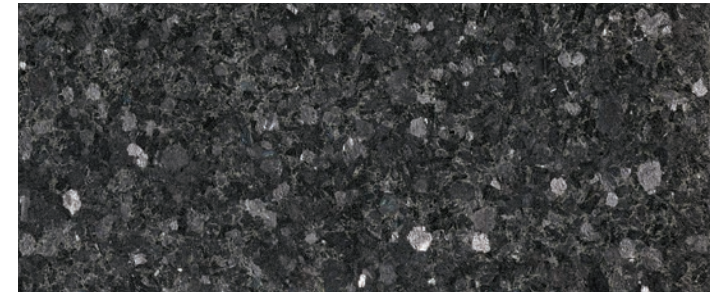
This collection of granite is unlike any other in the universe. The deep, rich textures tempt your senses and fill your space with an energy that is undeniably unique and alluring. *Experience the Celestial Collection.*

\*Photographs should be considered as representative portrayals only. Stone is a natural product and varies in color, texture, and size depending on installation methods and photographic lighting.



**AUROURA SUPER ROCK**

Close Up



Test data available by request.

**DETAILS**

---

Slab Size: 114" x 70"

Thickness: 2cm

Available Designs:  
Super Rock

Contact your sales representative  
for minimum order quantities.

**APPLICATIONS**

---

Interior & Exterior Wall Cladding  
Kitchen | Bath | Wet Areas



Wall



Residential



Commercial

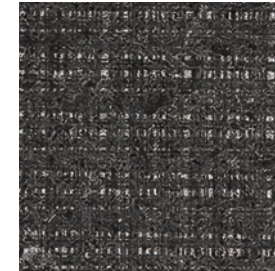


Water  
Resistant



CERES COTTON

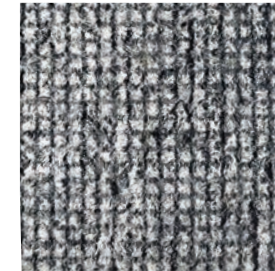
**CERES  
COTTON**



**CERES  
DOUBLE WAVE**



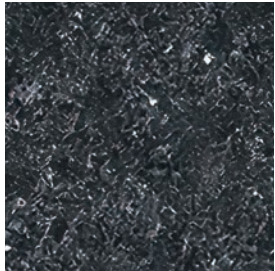
**CERES  
MICRODOT**



**CERES  
ROCK**



**CERES  
VELVET**



Test	Std.	Unit	Ave. Value	Condition
Dry Density	EN 1936	(gr/cm3)	2.86	-
Saturated Density	EN 1936	(gr/cm3)	2.90	-
Porosity	EN 1936	(%)	0.35	-
Specific Gravity	EN 1936	(Kg/m3)	2.90	-
Water Absorption Under Atmospheric Pressure	EN 13755	(%)	0.11	-
Capillary Water Absorption	EN 1925	(Kg/m2)	0.25	-
Compressive Strength	EN 1926	(MPa)	58.58	Dry
Tensile Strength	ISRM 1981	(MPa)	5.56	Dry
Flexural Strength	EN 12372	(MPa)	8.12	Dry
Resistance to Salt Crystallization	EN 12370	(Mass loss %)	-0.19	After 48 Cycles
Resistance to Freeze-Thaw	EN12371	(Mass loss %)	-0.01	After 48 Cycles
Resistance to Acid (H <sub>2</sub> SO <sub>4</sub> )	EN 13919	(Mass loss %)	-0.01	After 48 Cycles
Thermal Shock	EN 14066	(Mass loss %)	-0.01	After 48 Cycles

**DETAILS**

Slab Size: 114" x 70"

Thickness: 2cm

Available Designs:  
Cotton | Double Wave | Microdot | Rock | Velvet

Contact your sales representative  
for minimum order quantities.

**APPLICATIONS**

Interior & Exterior Wall Cladding  
Kitchen | Bath | Wet Areas



Wall



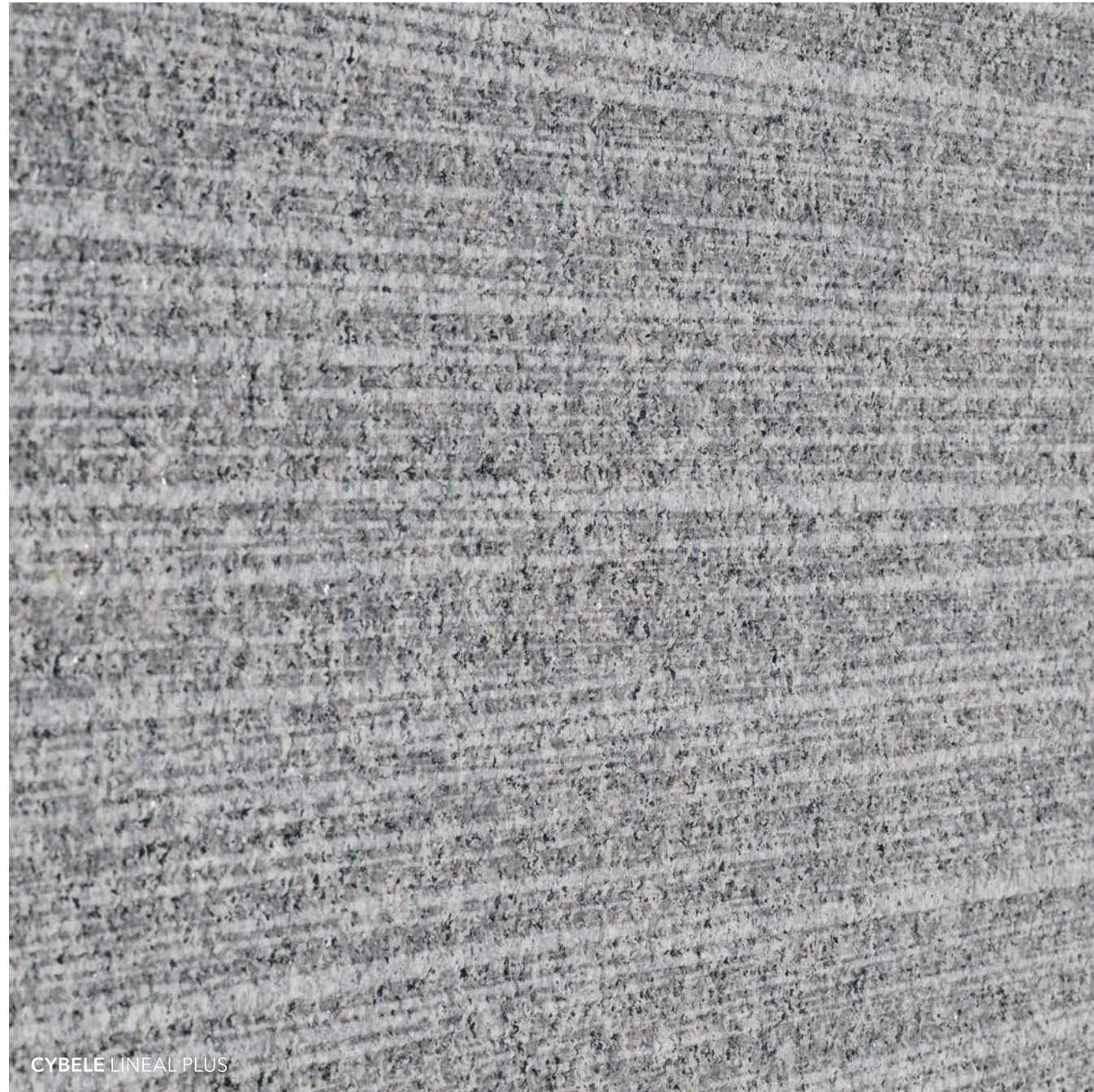
Residential



Commercial



Water Resistant



CYBELE LINEAL PLUS

**CYBELE LINEAL PLUS**

Close Up



Test	Std.	Unit	Ave. Value	Condition
Dry Density	EN 1936	(gr/cm3)	2.60	-
Saturated Density	EN 1936	(gr/cm3)	2.63	-
Porosity	EN 1936	(%)	2.61	-
Specific Gravity	EN 1936	(Kg/m3)	2.67	-
Water Absorption Under Atmospheric Pressure	EN 13755	(%)	1.00	-
Thermal Expansion Coefficient	EN 14581	10 <sup>-6</sup> C <sup>-1</sup>	-	-
Capillary Water Absorption	EN 1925	(Kg/m2)	1.36	-
Compressive Strength	EN 1926	(MPa)	129.20	Dry
Tensile Strength	ISRM 1981	(MPa)	9.84	Dry
Flexural Strength	EN 12372	(MPa)	24.33	Dry
Resistance to Salt Crystallization	EN 12370	(Mass loss %)	-0.71	After 48 Cycles
Resistance to Freeze-Thaw	EN12371	(Mass loss %)	-0.02	After 48 Cycles
Resistance to Acid (H <sub>2</sub> SO <sub>4</sub> )	EN 13919	(Mass loss %)	0	After 48 Cycles
Thermal Shock	EN 14066	(Mass loss %)	-0.06	After 48 Cycles

**DETAILS**

Slab Size: 114" x 70"

Thickness: 2cm

Available Designs:  
Lineal Plus

Contact your sales representative for minimum order quantities.

**APPLICATIONS**

Interior & Exterior Wall Cladding  
Kitchen | Bath | Wet Areas



Wall



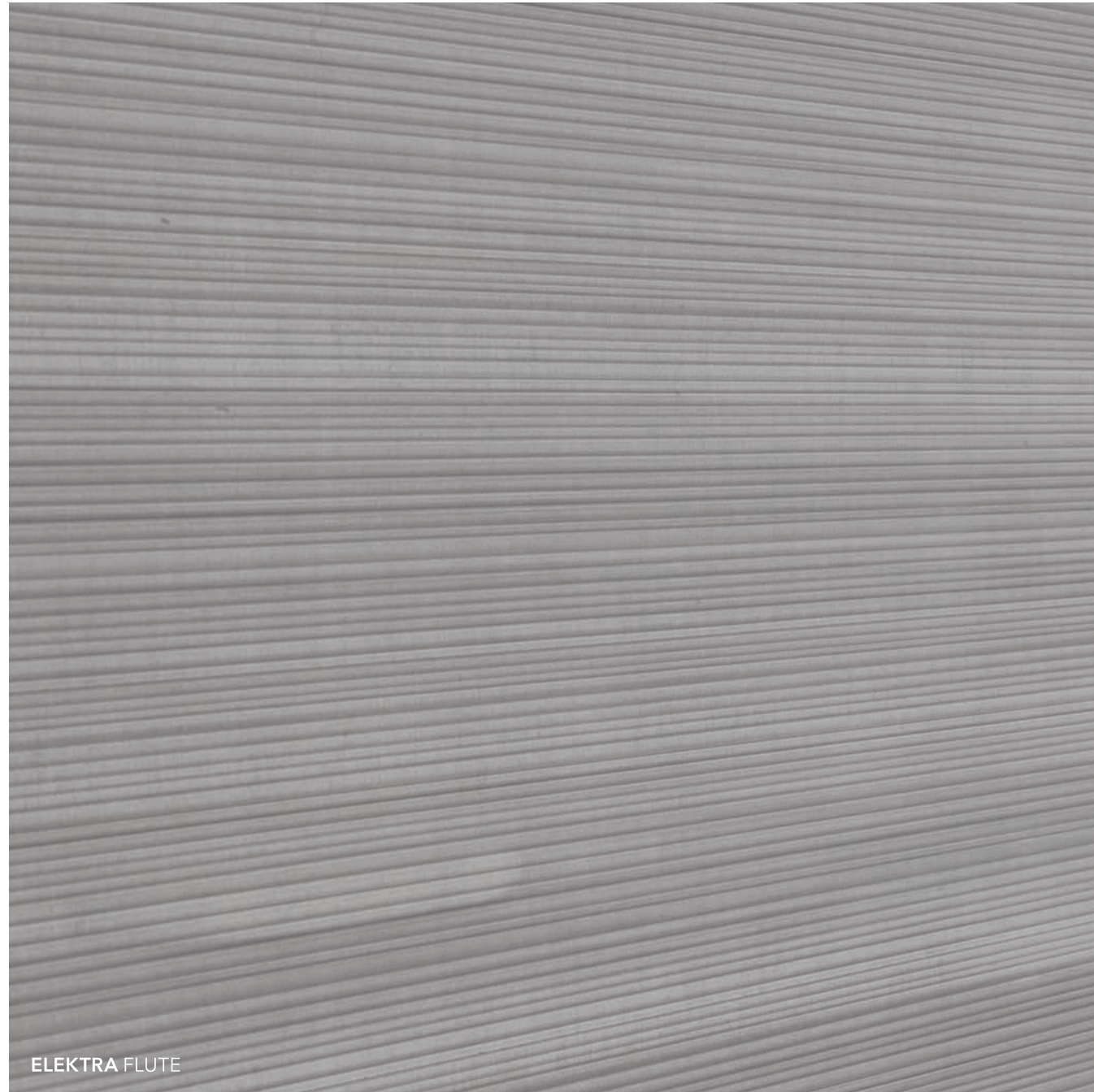
Residential



Commercial



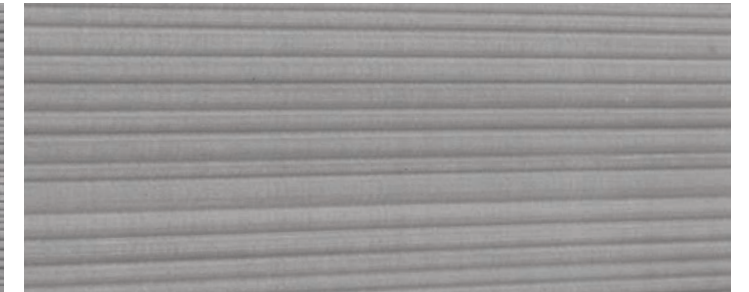
Water Resistant



ELEKTRA FLUTE

**ELEKTRA FLUTE**

Close Up



Test data available by request.

**DETAILS**

---

Slab Size: 114" x 70"

Thickness: 2cm

Available Designs:  
Flute

Contact your sales representative  
for minimum order quantities.

**APPLICATIONS**

---

Interior & Exterior Wall Cladding  
Kitchen | Bath | Wet Areas



Wall



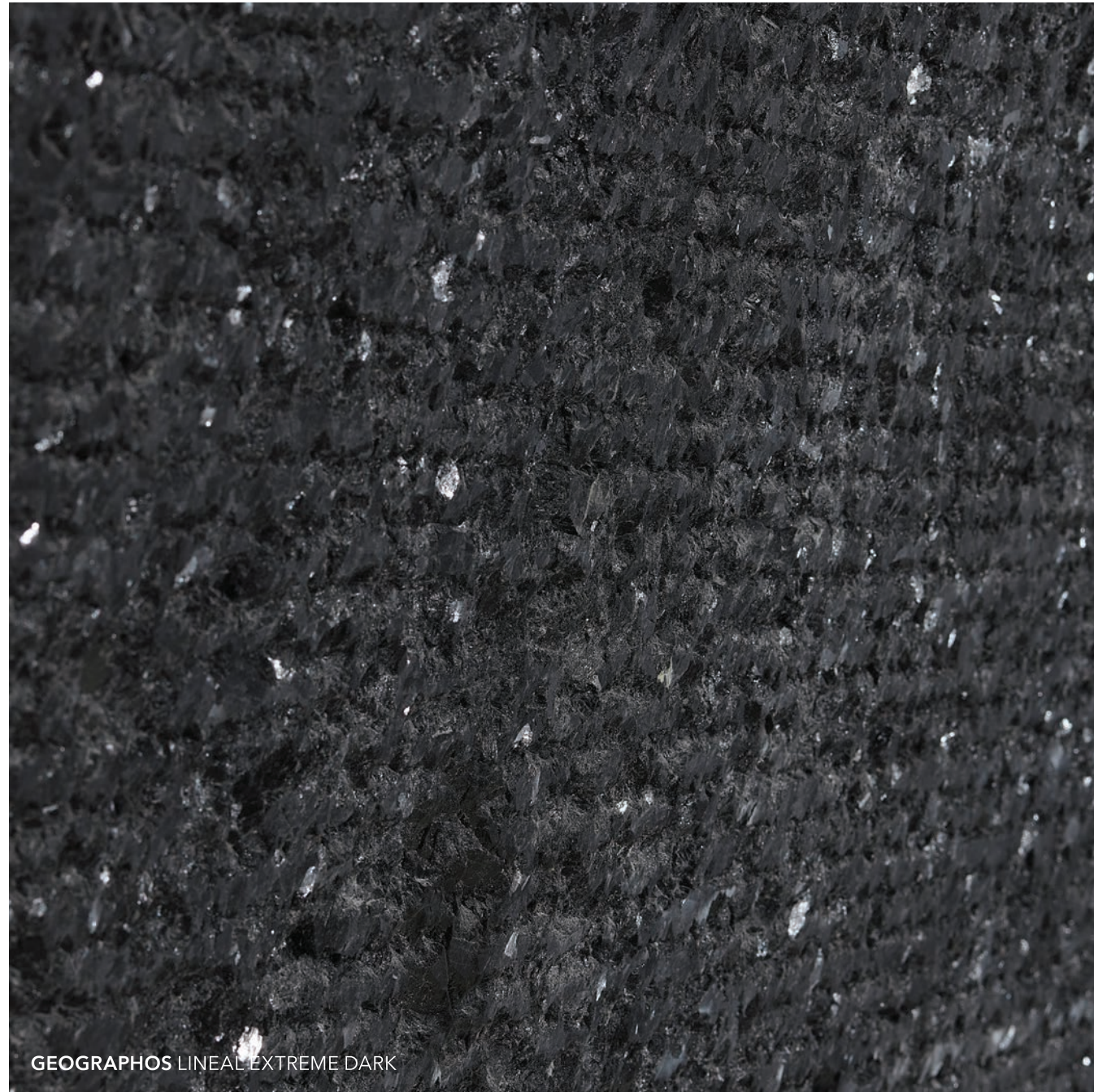
Residential



Commercial



Water  
Resistant

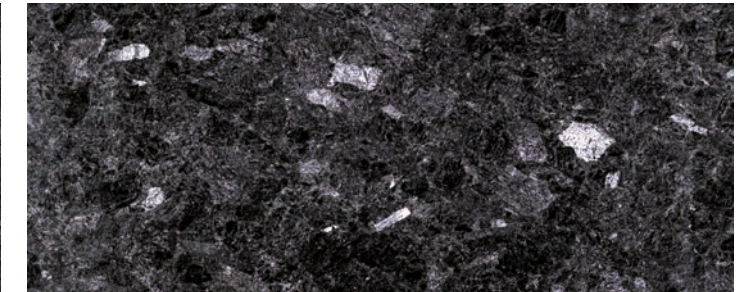


GEOGRAPHOS LINEAL EXTREME DARK

GEOGRAPHOS LINEAL EXTREME DARK



GEOGRAPHOS SUPER ROCK



Test	Std.	Unit	Ave. Value	Condition
Dry Density	EN 1936	(gr/cm3)	2.77	-
Saturated Density	EN 1936	(gr/cm3)	2.77	-
Porosity	EN 1936	(%)	0.25	-
Specific Gravity	EN 1936	(Kg/m3)	2.78	-
Water Absorption Under Atmospheric Pressure	EN 13755	(%)	0.08	-
Thermal Expansion Coefficient	EN 14581	10 <sup>-6</sup> C <sup>-1</sup>	3.01	-
Capillary Water Absorption	EN 1925	(Kg/m2)	0.19	-
Compressive Strength	EN 1926	(MPa)	127.46	Dry
Tensile Strength	ISRM 1981	(MPa)	8.10	Dry
Flexural Strength	EN 12372	(MPa)	18.16	Dry
Resistance to Salt Crystalization	EN 12370	(Mass loss %)	-0.046	After 48 Cycles
Resistance to Freeze-Thaw	EN12371	(Mass loss %)	-0.04	After 48 Cycles
Resistance to Acid (H <sub>2</sub> SO <sub>4</sub> )	EN 13919	(Mass loss %)	-0.03	After 48 Cycles
Thermal Shock	EN 14066	(Mass loss %)	-0.03	After 48 Cycles

DETAILS

Slab Size: 114" x 70"

Thickness: 2cm

Available Designs:  
Lineal Extreme Dark | Super Rock

Contact your sales representative  
for minimum order quantities.

APPLICATIONS

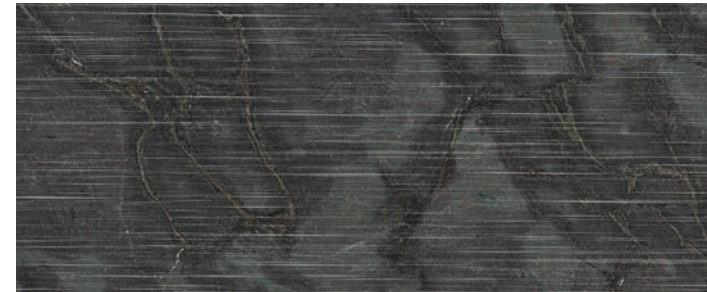
Interior & Exterior Wall Cladding  
Kitchen | Bath | Wet Areas



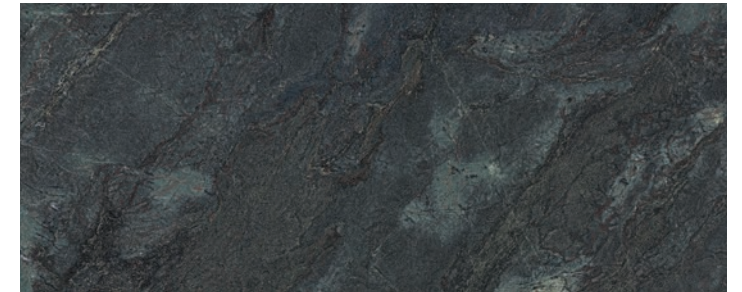




HATHOR LINEAL



HATHOR ROCK



Test	Std.	Unit	Ave. Value	Condition
Dry Density	EN 1936	(gr/cm3)	3.1	-
Saturated Density	EN 1936	(gr/cm3)	3.1	-
Porosity	EN 1936	(%)	0.28	-
Specific Gravity	EN 1936	(Kg/m3)	3.15	-
Water Absorption Under Atmospheric Pressure	EN 13755	(%)	0.09	-
Capillary Water Absorption	EN 1925	(Kg/m2)	0.19	-
Compressive Strength	EN 1926	(MPa)	169.66	Dry
Tensile Strength	ISRM 1981	(MPa)	20.45	Dry
Flexural Strength	EN 12372	(MPa)	39.93	Dry
Resistance to Salt Crystallization	EN 12370	(Mass loss %)	-0.11	After 48 Cycles
Resistance to Freeze-Thaw	EN12371	(Mass loss %)	-0.04	After 48 Cycles
Resistance to Acid (H <sub>2</sub> SO <sub>4</sub> )	EN 13919	(Mass loss %)	-0.07	After 48 Cycles
Thermal Shock	EN 14066	(Mass loss %)	-0.01	After 48 Cycles

DETAILS

Slab Size: 114" x 70"

Thickness: 2cm

Available Designs:  
Lineal | Rock

Contact your sales representative for minimum order quantities.

APPLICATIONS

Interior & Exterior Wall Cladding  
Kitchen | Bath | Wet Areas



Wall



Residential



Commercial



Water Resistant

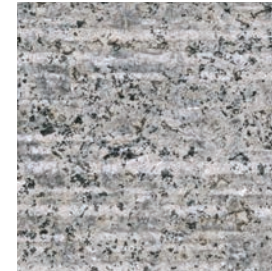


HERMES LINEAL PLUS

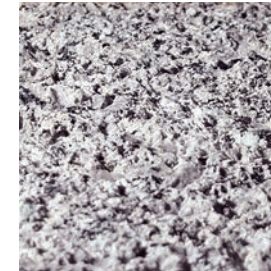
**HERMES LINEAL  
EXTREME LIGHT**



**HERMES  
LINEAL PLUS**



**HERMES  
SUPER ROCK**



Test	Std.	Unit	Ave. Value	Condition
Dry Density	EN 1936	(gr/cm <sup>3</sup> )	2.60	-
Saturated Density	EN 1936	(gr/cm <sup>3</sup> )	2.62	-
Porosity	EN 1936	(%)	1.28	-
Specific Gravity	EN 1936	(Kg/m <sup>3</sup> )	2.64	-
Water Absorption Under Atmospheric Pressure	EN 13755	(%)	0.49	-
Capillary Water Absorption	EN 1925	(Kg/m <sup>2</sup> )	0.54	-
Compressive Strength	EN 1926	(MPa)	86.16	Dry
Tensile Strength	ISRM 1981	(MPa)	8.54	Dry
Flexural Strength	EN 12372	(MPa)	12.51	Dry
Resistance to Salt Crystallization	EN 12370	(Mass loss %)	-0.26	After 48 Cycles
Resistance to Freeze-Thaw	EN12371	(Mass loss %)	-0.04	After 48 Cycles
Resistance to Acid (H <sub>2</sub> SO <sub>4</sub> )	EN 13919	(Mass loss %)	-0.07	After 48 Cycles
Thermal Shock	EN 14066	(Mass loss %)	-0.21	After 48 Cycles

**DETAILS**

Slab Size: 114" x 70"

Thickness: 2cm

Available Designs:  
Extreme Light | Lineal Plus | Super Rock

Contact your sales representative  
for minimum order quantities.

**APPLICATIONS**

Interior & Exterior Wall Cladding  
Kitchen | Bath | Wet Areas



Wall



Residential



Commercial



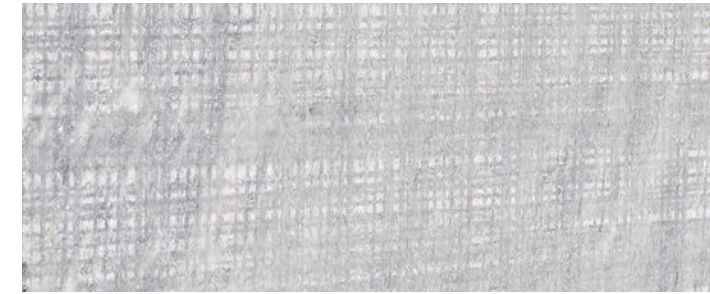
Water  
Resistant



ICARUS COTTON

**ICARUS COTTON**

Close Up



Test	Std.	Unit	Ave. Value	Condition
Dry Density	EN 1936	(gr/cm3)	2.71	-
Saturated Density	EN 1936	(gr/cm3)	2.72	-
Porosity	EN 1936	(%)	0.22	-
Specific Gravity	EN 1936	(Kg/m3)	2.72	-
Water Absorption Under Atmospheric Pressure	EN 13755	(%)	0.08	-
Capillary Water Absorption	EN 1925	(Kg/m2)	0.26	-
Compressive Strength	EN 1926	(MPa)	54.35	Dry
Tensile Strength	ISRM 1981	(MPa)	4.04	Dry
Flexural Strength	EN 12372	(MPa)	7.02	Dry
Resistance to Salt Crystallization	EN 12370	(Mass loss %)	-9.63	After 48 Cycles
Resistance to Freeze-Thaw	EN12371	(Mass loss %)	-0.02	After 48 Cycles
Resistance to Acid (H <sub>2</sub> SO <sub>4</sub> )	EN 13919	(Mass loss %)	-0.43	After 48 Cycles
Thermal Shock	EN 14066	(Mass loss %)	-0.03	After 48 Cycles

**DETAILS**

Slab Size: 114" x 70"

Thickness: 2cm

Available Designs:  
Cotton

Contact your sales representative for minimum order quantities.

**APPLICATIONS**

Interior & Exterior Wall Cladding  
Kitchen | Bath | Wet Areas



Wall



Residential



Commercial



Water Resistant



**JUNO LINEAL PLUS**



**JUNO OBLIQUE**



Test	Std.	Unit	Ave. Value	Condition
Dry Density	EN 1936	(gr/cm3)	2.64	-
Saturated Density	EN 1936	(gr/cm3)	2.65	-
Porosity	EN 1936	(%)	1.19	-
Water Absorption Under Atmospheric Pressure	EN 13755	(%)	0.55	-
Capillary Water Absorption	EN 1925	(Kg/m2)	1.2	-
Flexural Strength	EN 12372	(MPa)	12.05	Dry
Resistance to Salt Crystallization	EN 12370	(Mass loss %)	-0.26	After 48 Cycles
Resistance to Freeze-Thaw	EN12371	(Mass loss %)	0	After 48 Cycles
Resistance to Acid (H <sub>2</sub> SO <sub>4</sub> )	EN 13919	(Mass loss %)	0	After 48 Cycles

**DETAILS**

Slab Size: 114" x 70"

Thickness: 2cm

Available Designs:  
Lineal Plus | Oblique

Contact your sales representative  
for minimum order quantities.

**APPLICATIONS**

Interior & Exterior Wall Cladding  
Kitchen | Bath | Wet Areas



Wall



Residential



Commercial



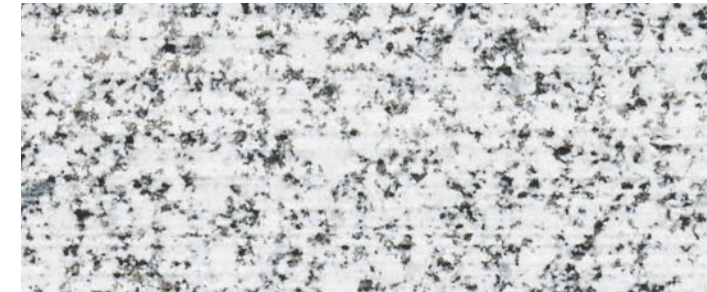
Water  
Resistant



PALLAS LINEAL PLUS

**PALLAS LINEAL PLUS**

Close Up



Test	Std.	Unit	Ave. Value	Condition
Dry Density	EN 1936	(gr/cm3)	2.73	-
Saturated Density	EN 1936	(gr/cm3)	2.74	-
Porosity	EN 1936	(%)	0.81	-
Specific Gravity	EN 1936	(Kg/m3)	2.75	-
Water Absorption Under Atmospheric Pressure	EN 13755	(%)	0.30	-
Thermal Expansion Coefficient	EN 14581	10 <sup>-6</sup> C <sup>-1</sup>	-	-
Capillary Water Absorption	EN 1925	(Kg/m2)	0.62	-
Compressive Strength	EN 1926	(MPa)	89.11	Dry
Tensile Strength	ISRM 1981	(MPa)	7.75	Dry
Flexural Strength	EN 12372	(MPa)	18.55	Dry
Resistance to Salt Crystallization	EN 12370	(Mass loss %)	-2.36	After 48 Cycles
Resistance to Freeze-Thaw	EN12371	(Mass loss %)	-0.06	After 48 Cycles
Resistance to Acid (H <sub>2</sub> SO <sub>4</sub> )	EN 13919	(Mass loss %)	0	After 48 Cycles
Thermal Shock	EN 14066	(Mass loss %)	-0.07	After 48 Cycles

**DETAILS**

Slab Size: 114" x 70"

Thickness: 2cm

Available Designs:  
Lineal Plus

Contact your sales representative for minimum order quantities.

**APPLICATIONS**

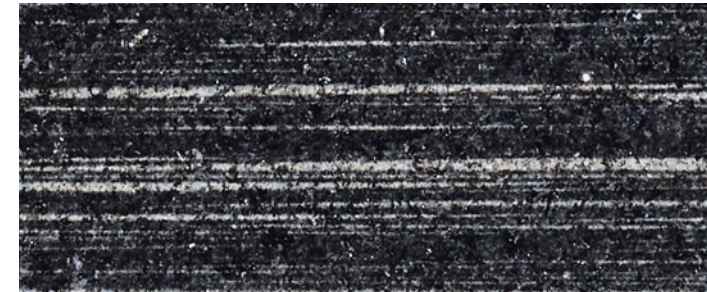
Interior & Exterior Wall Cladding  
Kitchen | Bath | Wet Areas



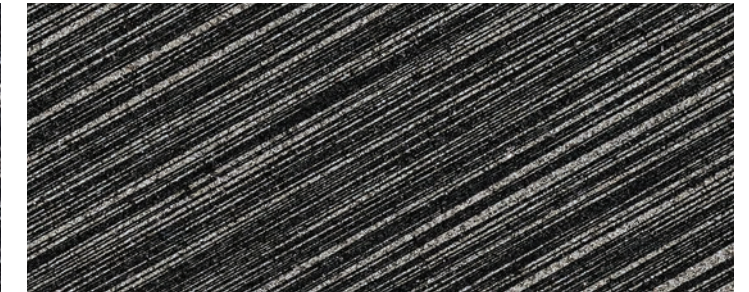


THEMIS OBLIQUE

THEMIS LINEAL



THEMIS OBLIQUE



Test	Std.	Unit	Ave. Value	Condition
Dry Density	EN 1936	(gr/cm3)	2.92	-
Saturated Density	EN 1936	(gr/cm3)	2.92	-
Porosity	EN 1936	(%)	0.42	-
Specific Gravity	EN 1936	(Kg/m3)	2.93	-
Water Absorption Under Atmospheric Pressure	EN 13755	(%)	0.14	-
Capillary Water Absorption	EN 1925	(Kg/m2)	0.41	-
Compressive Strength	EN 1926	(MPa)	90.60	Dry
Tensile Strength	ISRM 1981	(MPa)	11.07	Dry
Flexural Strength	EN 12372	(MPa)	14.31	Dry
Resistance to Salt Crystallization	EN 12370	(Mass loss %)	-0.02	After 48 Cycles
Resistance to Freeze-Thaw	EN12371	(Mass loss %)	-0.006	After 48 Cycles
Resistance to Acid (H <sub>2</sub> SO <sub>4</sub> )	EN 13919	(Mass loss %)	-0.01	After 48 Cycles
Thermal Shock	EN 14066	(Mass loss %)	-0.01	After 48 Cycles

DETAILS

Slab Size: 114" x 70"

Thickness: 2cm

Available Designs:  
Lineal | Oblique

Contact your sales representative  
for minimum order quantities.

APPLICATIONS

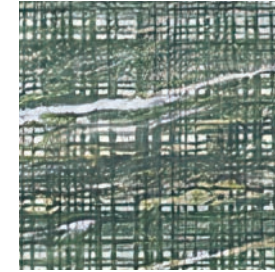
Interior & Exterior Wall Cladding  
Kitchen | Bath | Wet Areas



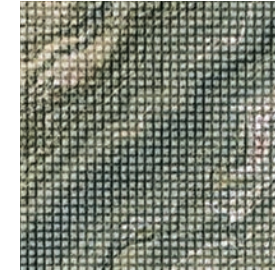


VESTA COTTON

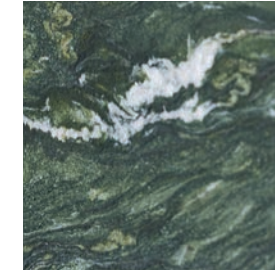
VESTA COTTON



VESTA MICRODOT



VESTA HYDRO



Test	Std.	Unit	Ave. Value	Condition
Dry Density	EN 1936	(gr/cm3)	2.99	-
Saturated Density	EN 1936	(gr/cm3)	3.00	-
Porosity	EN 1936	(%)	0.59	-
Specific Gravity	EN 1936	(Kg/m3)	3.01	-
Water Absorption Under Atmospheric Pressure	EN 13755	(%)	0.19	-
Capillary Water Absorption	EN 1925	(Kg/m2)	0.45	-
Compressive Strength	EN 1926	(MPa)	57.79	Dry
Tensile Strength	ISRM 1981	(MPa)	8.65	Dry
Flexural Strength	EN 12372	(MPa)	3.63	Dry
Resistance to Salt Crystallization	EN 12370	(Mass loss %)	-1.73	After 48 Cycles
Resistance to Freeze-Thaw	EN12371	(Mass loss %)	-0.01	After 48 Cycles
Resistance to Acid (H <sub>2</sub> SO <sub>4</sub> )	EN 13919	(Mass loss %)	-0.11	After 48 Cycles
Thermal Shock	EN 14066	(Mass loss %)	-0.006	After 48 Cycles

**DETAILS**

Slab Size: 114" x 70"

Thickness: 2cm

Available Designs:  
Cotton | Microdot | Hydro

Contact your sales representative for minimum order quantities.

**APPLICATIONS**

Interior & Exterior Wall Cladding  
Kitchen | Bath | Wet Areas



Wall



Residential



Commercial



Water Resistant



THEMIS LINEAL







HOUSTON TEXAS  
9311 Bay Area Blvd, Suite 400  
Pasadena, Texas 77507

DALLAS TEXAS  
HEADQUARTERS  
2933 Eisenhower St, Suite 110  
Carrollton, TX 75007

TAMPA FLORIDA  
9842 Currie Davis Dr.  
Tampa, FL 33619

**888.593.4441**  
**[www.Dynamic-Stone.com](http://www.Dynamic-Stone.com)**