

Ceres

Granite Slab

CELESTIAL

COLLECTION



Featured: Ceres | Cotton

Details

Slab Size: 114" x 70"
Thickness: 2cm

Available in: Slabs & Cut to Size
Contact your sales representative
for minimum order quantities.

Applications

Interior & Exterior Wall Cladding
Kitchen | Bath | Wet Areas



Test	Std.	Unit	Ave. Value	Condition
Dry Density	EN 1936	(gr/cm3)	2.86	-
Saturated Density	EN 1936	(gr/cm3)	2.90	-
Porosity	EN 1936	(%)	0.35	-
Specific Gravity	EN 1936	(Kg/m3)	2.90	-
Water Absorption Under Atmospheric Pressure	EN 13755	(%)	0.11	-
Capillary Water Absorption	EN 1925	(Kg/m2)	0.25	-
Compressive Strength	EN 1926	(MPa)	58.58	Dry
Tensile Strength	ISRM 1981	(MPa)	5.56	Dry
Flexural Strength	EN 12372	(MPa)	8.12	Dry
Resistance to Salt Crystallization	EN 12370	(Mass loss %)	-0.19	After 48 Cycles
Resistance to Freeze-Thaw	EN12371	(Mass loss %)	-0.01	After 48 Cycles
Resistance to Acid (H ₂ SO ₄)	EN 13919	(Mass loss %)	-0.01	After 48 Cycles
Thermal Shock	EN 14066	(Mass loss %)	-0.01	After 48 Cycles

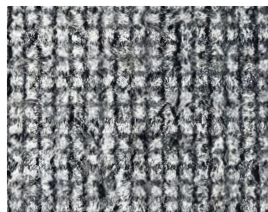
Available Designs



Ceres | Cotton



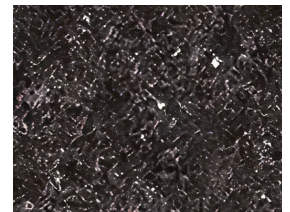
Ceres | Double Wave



Ceres | Microdot



Ceres | Rock



Ceres | Velvet